

Match the clothes to the characters

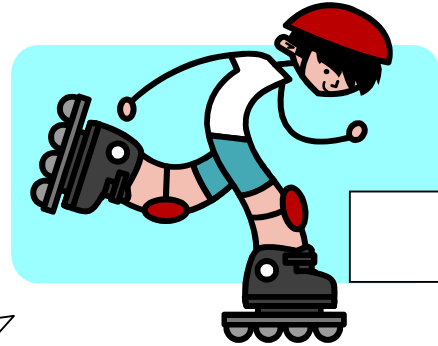
Can you match the descriptions with the characters in the pictures?! Read the descriptions and write the letters B-G in the boxes. There is 1 example to help you:

A



Example:

A's wearing a long-sleeved T-shirt and jeans with a pair of dark shoes.



B's wearing a skirt and a blouse. B's also wearing a long jacket.

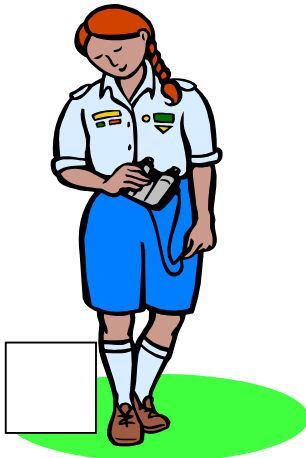
C's wearing a t-shirt and a pair of trousers with boots. C's also wearing a scarf and a hat.



D's wearing a t-shirt, shorts and a pair of roller skates. D's wearing a helmet, too.



E's wearing shorts and a shirt. E's wearing a pair of long socks and shoes, too.



F's wearing a dress with a belt, a waistcoat and long gloves. F's wearing a hat and cowboy boots, too.

G's wearing trousers and a short-sleeved shirt. G's also wearing sunglasses.

